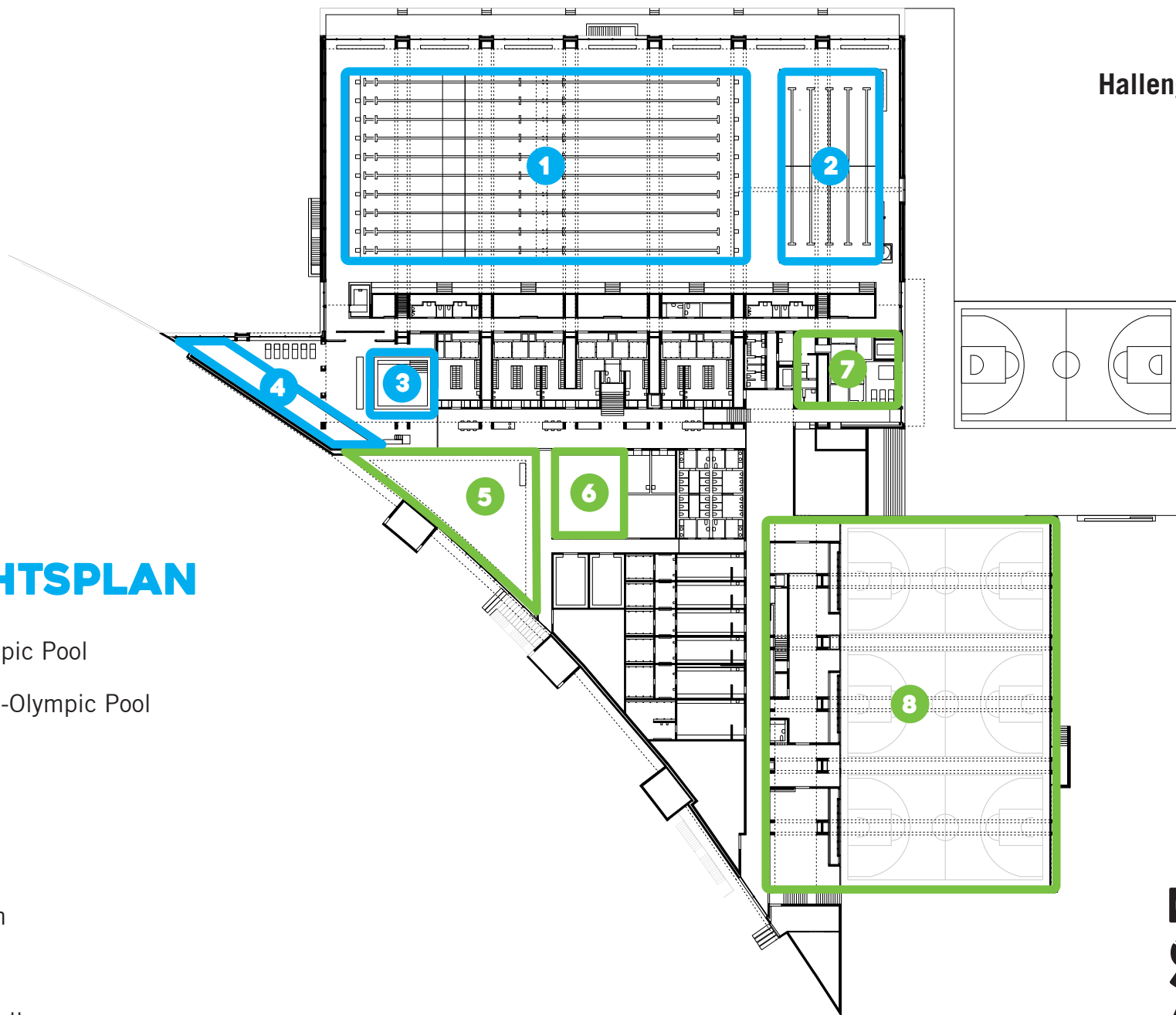


Hallengeschoss

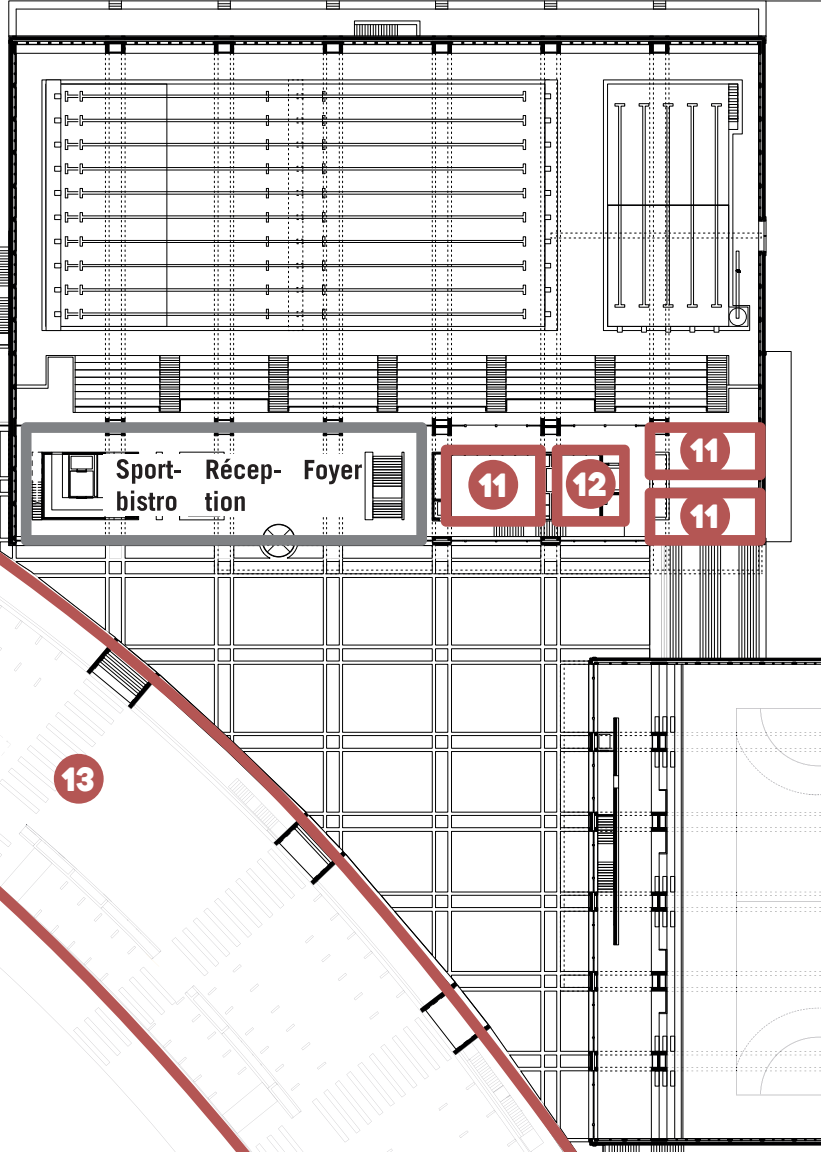
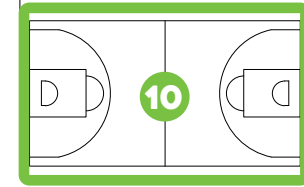


ÜBERSICHTSPLAN

- 1 50 Meter Olympic Pool
- 2 25 Meter Semi-Olympic Pool
- 3 Relax-Pool
- 4 Kids-Pool
- 5 Athletikraum
- 6 Gymnastikraum
- 7 Spa
- 8 Dreifachsporthalle



Eingangsgeschoss



Sport- Récep- Foyer
bistro tion

11 12 11
11

- 9** Rasenspielfeld
- 10** Allwetterplatz
- 11** Seminarräume
- 12** Gruppenraum
- 13** Parkplätze

